





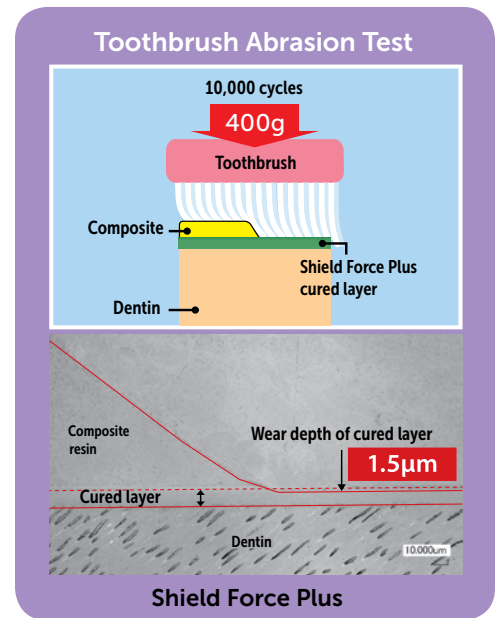


# Shield Force® Plus VS GLUMA® Desensitizer\*

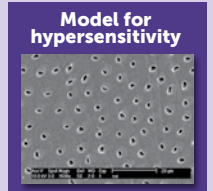
	Tokuyama <b>SHIELD FORCE PLUS</b>	Heraeus Kulzer* <b>GLUMA</b>	<b>WINNER</b>
<b>Composition</b>	<b>Resin-based</b>	<b>Glutaraldehyde</b>	
	Phosphoric acid monomer	2-hydroxyethyl methacrylate	
	Bis-GMA	Glutaral	
	3G (TEGDMA)		
	HEMA		
	Alcohol		
	Water		
	Camphorquinone		
<b>FEATURES &amp; BENEFITS</b>			
<b>Expected Long-Term Pain Relief</b>	3 Years****	9 Months	
<b>Fluoride Releasing</b>	Yes	No	
<b>Solution Color</b>	Green	Clear	
<b>Shelf Life</b>	2 Years	2 Years	
<b>Refrigeration Needed</b>	Yes	No	
<b>INDICATIONS</b>			
<b>Under Crowns</b>	Yes	Yes	
<b>Bridges</b>	Yes	Yes	
<b>Inlays and Onlays</b>	Yes	Yes	
<b>Veneers</b>	Yes	Yes	
<b>Provisionals</b>	Yes	Yes	
<b>Under Direct Restorations</b>	Yes	Yes	
<b>Cervical Erosions</b>	Yes	Yes	
<b>Exposed Dentin Surface</b>	Yes	Yes	
<b>Gingival Recession</b>	Yes	Yes	
<b>APPLICATION PROCESS</b>			
	30 Seconds	≈ 65 Seconds	
<b>Isolate with Dental Dam</b>	Optional	Yes	
<b>Apply</b>	10 seconds	45 seconds	
<b>Dry</b>	10 seconds	≈ 10 seconds	
<b>Rinse</b>	-	≈ 10 seconds	
<b>Cure</b>	10 seconds		
<b>Price Per Application***</b>	\$0.66	\$0.85	
<b>Number of Applications</b>	180	172	



**Superior long-term results**  
Shield Force Plus provides longer-lasting desensitization.

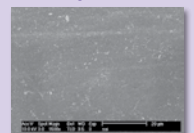
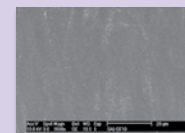
**Sealing of dentinal tubules and durability:**

- A layer of Shield Force Plus remains on the dentin surface.
- Other products have worn out and exposed dentinal tubules.



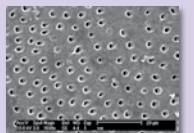
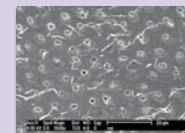
**Initial placement**

**10,000 thermal cycles**



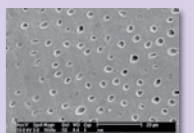
Shield Force® Plus

Shield Force® Plus



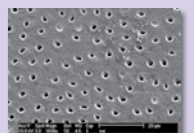
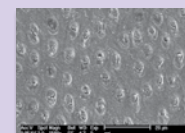
SuperSeal®

SuperSeal®



Seal&Protect®

Seal&Protect®












Gluma® Desensitizer

Gluma® Desensitizer\*

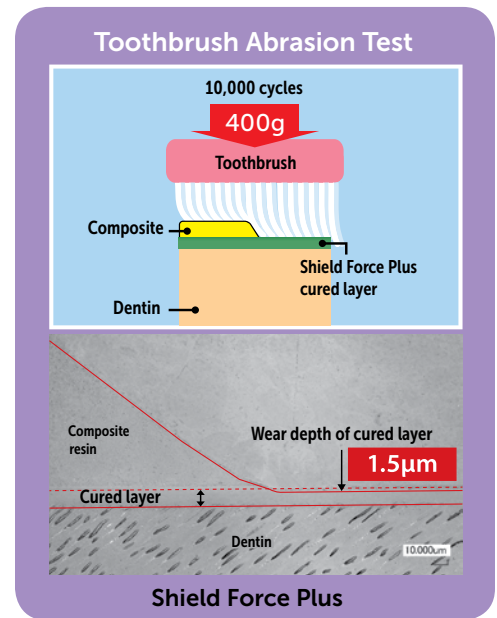
\*Not a registered trademark of Tokuyama Dental Corporation.  
\*\* In-house data, R&D, Tokuyama Dental Corporation.  
\*\*\*Based on Henry Schein pricing.  
\*\*\*\*Results may vary based on patient diet, proper oral care, and conformance to product directions. Wear data tested in vitro.



# Shield Force® Plus vs Vanish™ XT\*

Tokuyama		3M*		WINNER
	SHIELD FORCE PLUS	VANISH XT		
Composition	Resin-based	RMGI-based		
	Phosphoric acid monomer	Copolymer of acrylic and itaconic, acids		
	Bis-GMA	Water		
	3G (TEGDMA)	2-Hydroxyethyl Methacrylate (HEMA)		
	HEMA	Calcium Glycerophosphate		
	Alcohol			
	Water			
	Camphorquinone			
<b>FEATURES &amp; BENEFITS</b>				
Expected Long-Term Pain Relief	3 Years****	6 Months		
Fluoride Releasing	Yes	Yes		
Fluoride Recharging	No	Yes		
Solution Color	Green			
Shelf Life	2 Years	2 Years		
Refrigeration Needed	Yes	No		
Delivery System	Bottle 	Paste/Liquid Mix Clicker 		
<b>INDICATIONS</b>				
Under Crowns	Yes			
Bridges	Yes			
Inlays and Onlays	Yes			
Veneers	Yes			
Provisionals	Yes			
Under Direct Restorations	Yes			
Cervical Erosions	Yes	Yes		
Exposed Dentin Surface	Yes	Yes		
Gingival Recession	Yes	Yes		
<b>APPLICATION PROCESS</b>				
	30 Seconds	≈ 45 Seconds		
Isolate with Dental Dam	Optional	Optional		
Etch Tooth	Not needed	15 seconds for enamel surface		
Apply	10 seconds	5 seconds		
Dry	10 seconds	-		
Rinse	-	-		
Cure	10 seconds	20 seconds		
Wipe	-	5 seconds		
Price Per Application***	\$0.66	\$2.66		
Number of Applications	180	80-480		

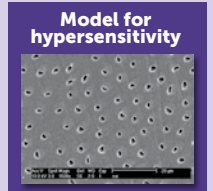
\*Not a registered trademark of Tokuyama Dental Corporation.  
 \*\* In-house data, R&D, Tokuyama Dental Corporation.  
 \*\*\*Based on Henry Schein pricing.  
 \*\*\*\*Results may vary based on patient diet, proper oral care, and conformance to product directions. Wear data tested in vitro.



**Superior long-term results**  
 Shield Force Plus provides longer-lasting desensitization.

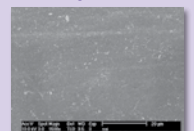
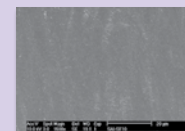
**Sealing of dentinal tubules and durability:**

- A layer of Shield Force Plus remains on the dentin surface.
- Other products have worn out and exposed dentinal tubules.



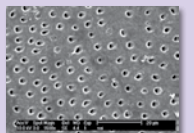
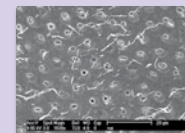
**Initial placement**

**10,000 thermal cycles**



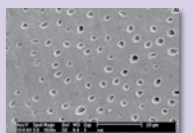
Shield Force® Plus

Shield Force® Plus



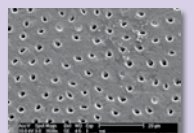
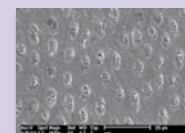
SuperSeal®

SuperSeal®



Seal&Protect®

Seal&Protect®



Gluma® Desensitizer

Gluma® Desensitizer\*

